

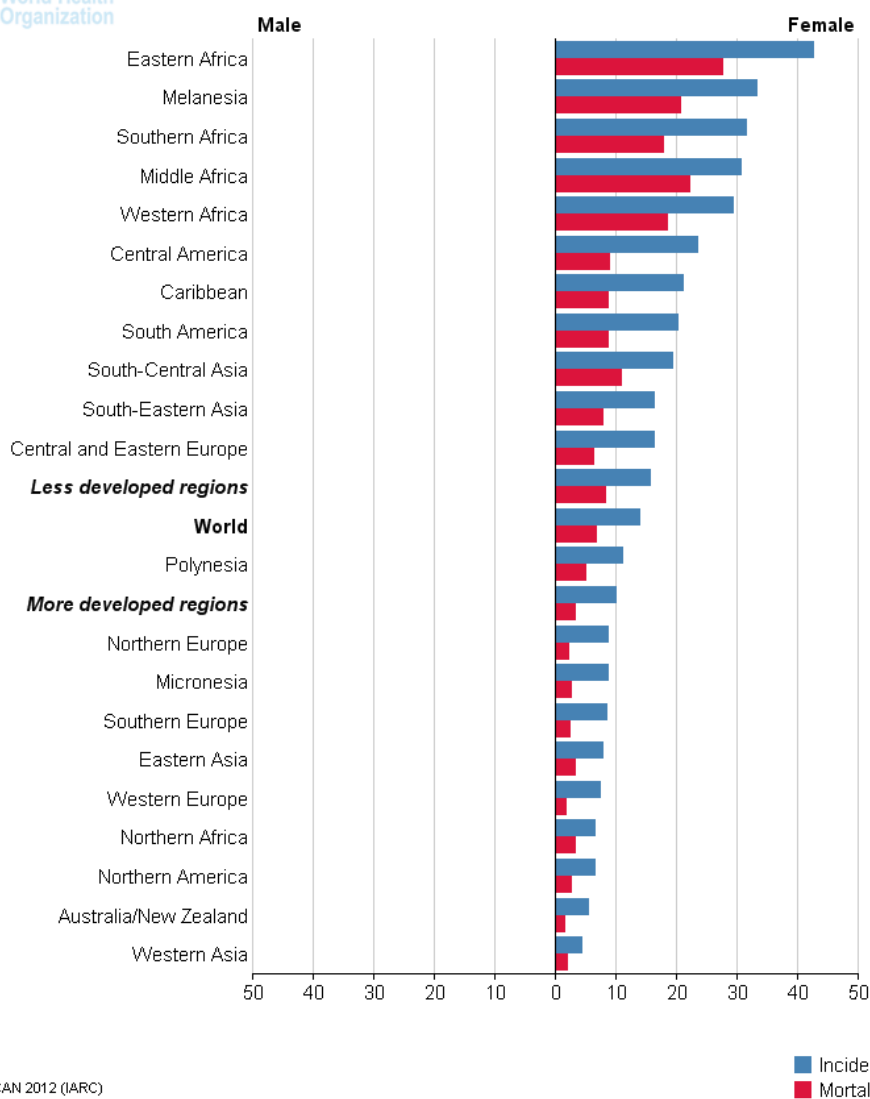
[Incidence](#)

[Mortality](#)

Cervical Cancer Estimated Incidence, Mortality and Prevalence Worldwide in 2012

Estimated numbers (thousands)	Cases	Deaths	5-year prev.
World	528	266	1547
More developed regions	83	35	289
Less developed regions	445	230	1258
WHO Africa region (AFRO)	92	57	236
WHO Americas region (PAHO)	83	36	279
WHO East Mediterranean region (EMRO)	15	8	42
WHO Europe region (EURO)	67	28	225
WHO South-East Asia region (SEARO)	175	94	465
WHO Western Pacific region (WPRO)	94	43	299
IARC membership (24 countries)	206	103	595
United States of America	13	7	47
China	62	30	190
India	123	67	309
European Union (EU-28)	34	13	115

International Agency for Research on Cancer

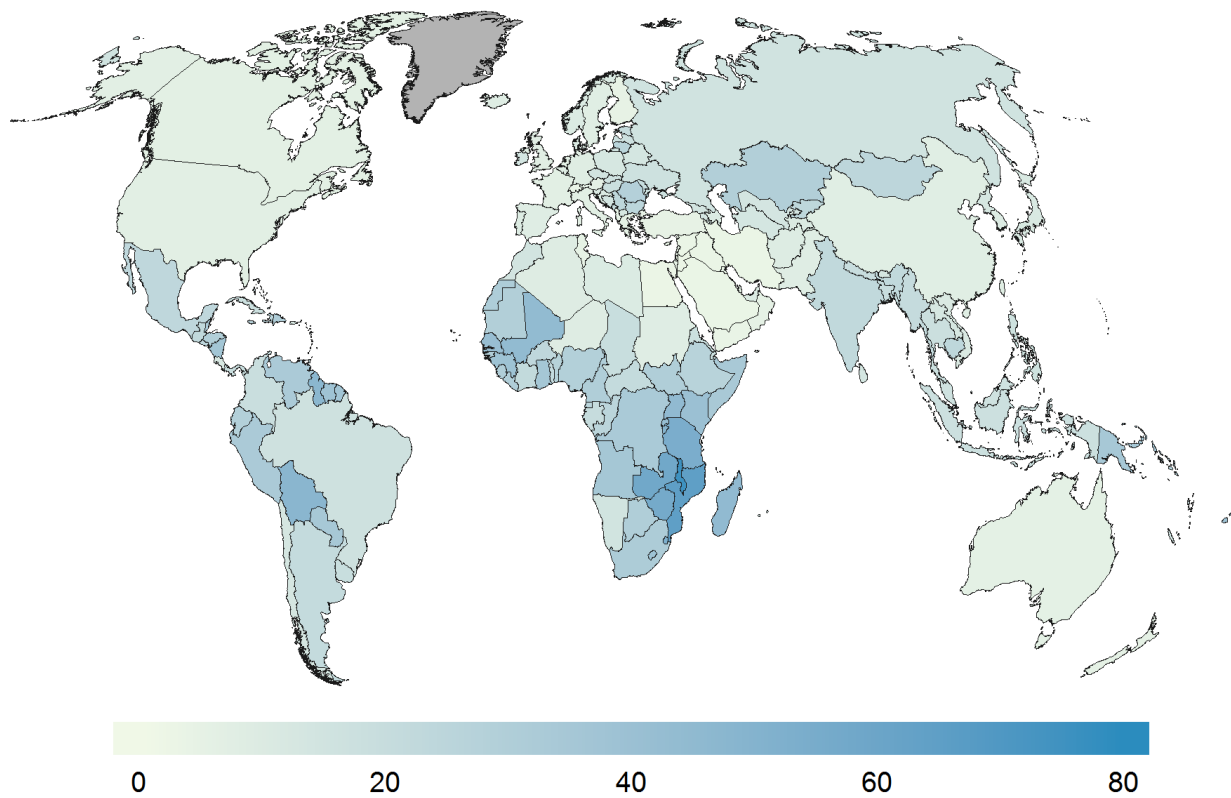


At a glance

Cervical cancer is the fourth most common cancer in women, and the seventh overall, with an estimated 528,000 new cases in 2012. As with liver cancer, a large majority (around 85%) of the global burden occurs in the less developed regions, where it accounts for almost 12% of all female cancers. High-risk regions, with estimated ASRs over 30 per 100,000, include Eastern Africa (42.7), Melanesia (33.3), Southern (31.5) and Middle (30.6) Africa. Rates are lowest in Australia/New Zealand (5.5) and Western Asia (4.4). Cervical cancer remains the most common cancer in women in Eastern and Middle Africa.

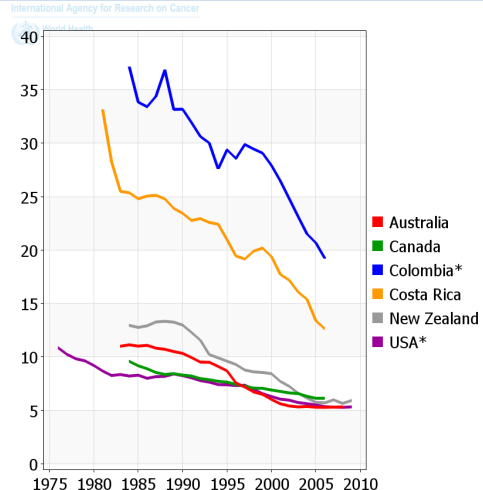
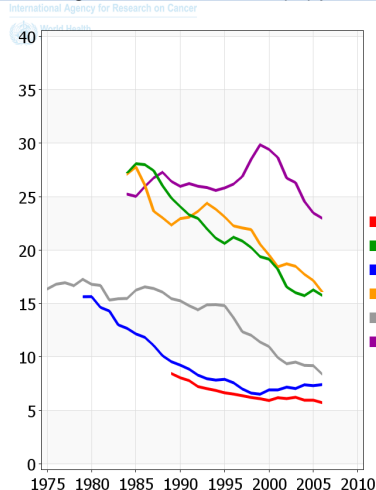
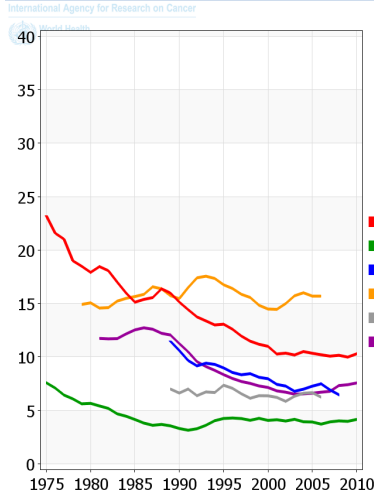
There were an estimated 266,000 deaths from cervical cancer worldwide in 2012, accounting for 7.5% of all female cancer deaths. Almost nine out of ten (87%) cervical cancer deaths occur in the less developed regions. Mortality varies 18-fold between the different regions of the world, with rates ranging from less than 2 per 100,000 in Western Asia, Western Europe and Australia/New Zealand to more than 20 per 100,000 in Melanesia (20.6), Middle (22.2) and Eastern (27.6) Africa.

▲ Estimated Cervical Cancer Incidence Worldwide in 2012



Estimated age-standardised rates (World) per 100,000

Trends in incidence of cervical cancer in selected countries: age-standardised rate (W) per 100,000, men

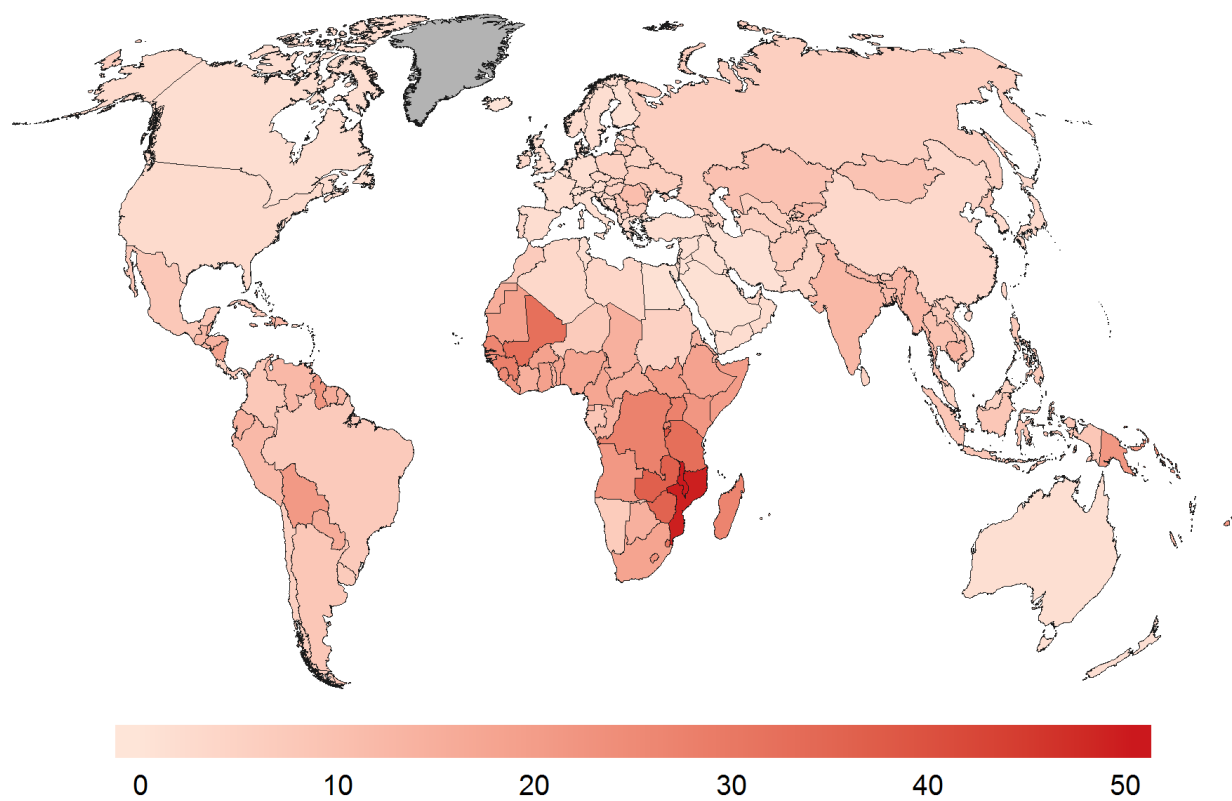


*Regional data
NORDCAN (www.ancre.nu)
ECO (eco.iarc.fr)
England: www.ons.gov.uk

*Regional data
CIS.iarc.fr

*Regional data
CIS.iarc.fr
Australia: www.aihw.gov.au
New Zealand: www.health.govt.nz
USA: seer.cancer.gov

▲ Estimated Cervical Cancer Mortality Worldwide in 2012



Estimated age-standardised rates (World) per 100,000

GLOBOCAN 2012 (IARC), *Section of Cancer Information* (11/12/2013)

IARC, 150 Cours Albert Thomas, 69372 Lyon CEDEX 08, France - Tel: +33 (0)4 72 73 84 85 - Fax: +33 (0)4 72 73 85 75

© IARC 2013 - All Rights Reserved - Email: www@iarc.fr